



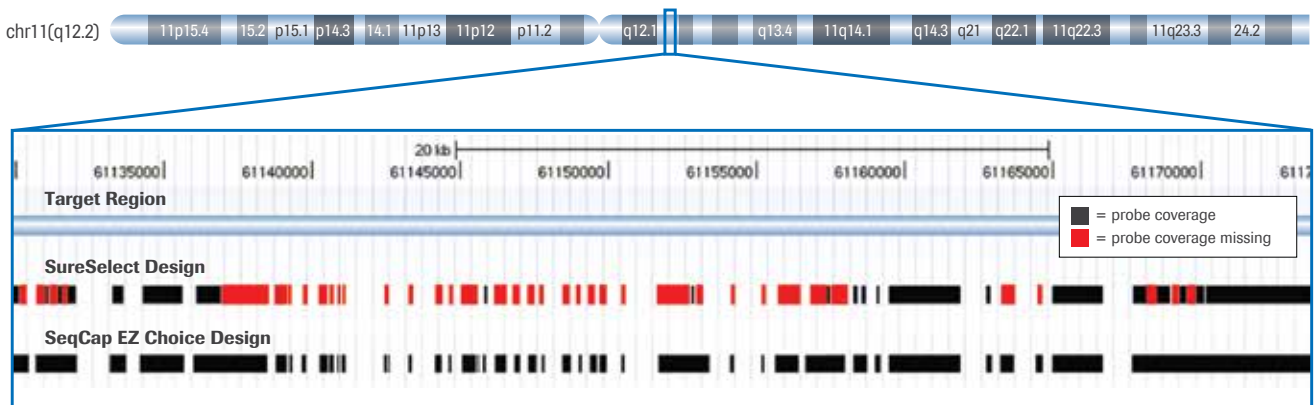




# Custom tools to fit your research

## SeqCap EZ Choice and SeqCap EZ Developer probes

Superior enrichment starts with superior design



**SeqCap EZ Choice Probes provide superior design coverage over Agilent SureSelect.** Design comparison between SeqCap EZ Choice Probes and SureSelect for a 500 Kb target on chr11 (61-61.5 Mb). SeqCap EZ Choice Probes target 20% more of the target region (372 Kb vs. 222 Kb), as illustrated by increased black areas, denoting more coverage of the target regions. Note: The SeqCap EZ Choice design was created using Roche standard design parameters; the SureSelect design was created using Agilent eArray online design tool using default design parameters.

Researchers can create their own target enrichment probe pools with Roche’s custom option by utilizing SeqCap EZ Choice Probes for human targeted resequencing studies and SeqCap EZ Developer Probes for non-human targeted studies.”

Good enrichment starts with good custom probe design. The Roche design algorithm selects probes where others cannot, providing you more coverage of the target area to better enable your variant discovery research.

### Available Custom Design Products

Choice	Size (Mb)
SeqCap EZ Choice Probes	up to 7 Mb
SeqCap EZ Choice XL Probes	>7-200 Mb
Comprehensive Cancer Design	4 Mb
Neurology Panel Design	1.5 Mb
Developer	Size (Mb)
SeqCap EZ Developer Probes	variable
Soy Exome	85 Mb
Mouse Exome	54 Mb

**Available custom design products and coverage sizes.** SeqCap EZ Choice and Developer products are available in a wide variety of product offerings.

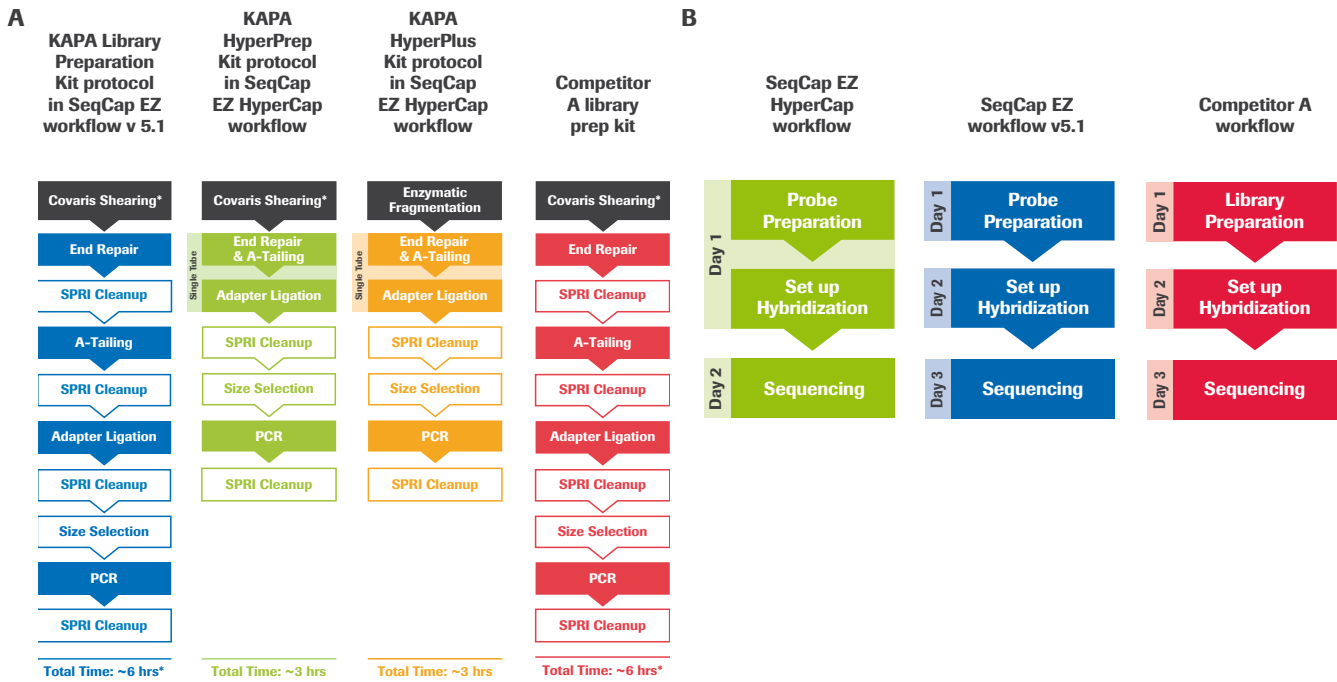




# SeqCap EZ HyperCap: One enrichment workflow for all sample types and starting DNA amounts

The SeqCap EZ HyperCap workflow integrates KAPA HyperPrep and HyperPlus kits with an optimized SeqCap EZ target enrichment protocol, enabling a complete sample prep solution that can be tailored to different applications, sample types, and starting DNA amounts. This workflow reduces hands-on and overall time, user intervention, and cost, all while maintaining excellent sequence data quality.

- Reduced workflow time to 1.5 days - from extracted DNA to sequencing-ready libraries.



**(A) Workflow of various library preparation kits.** KAPA HyperPrep and HyperPlus kits reduce library construction time by half. \*Covaris shearing time is dependent on instrument, make, model and batch size. Time estimate for the KAPA Library Preparation Kit and KAPA HyperPrep Kit do not include Covaris shearing. **(B) Workflow of the SeqCap EZ target enrichment protocols.**

## SeqCap EZ Exome Target Enrichment probes: Tools to fit your exome research

The human exome is critical to our genetic make-up and is widely accepted by researchers as having the greatest influence on how our genetic blueprint is utilized. The exome is defined as all coding exons in the genome and is comprised of the most functionally relevant and best understood 1% of the human genome. SeqCap EZ Exome Probes are available in numerous configurations to suit your needs.

### SeqCap EZ MedExome Probes

- Exome with enhanced coverage of focus of medically relevant genes
- 47 Mb

### SeqCap EZ MedExome Plus Probes

- Customizable version of MedExome
- Up to 200 Mb of custom content

### SeqCap EZ Exome Probes v3.0

- Comprehensive research exome
- 64 Mb

### SeqCap EZ Exome + UTR Probes

- Addition of UTR content to SeqCap EZ Exome v3.0
- 96 Mb

### SeqCap EZ Exome Plus Probes

- Customizable version of SeqCap EZ Exome v3.0
- Up to 114 Mb

### HGSC VCRome

- Exome co-developed with Baylor HGSC
- 37 Mb

### UTR only

- Enriches UTR only. Add to existing exome data
- 50 Mb

### Inherited Disease Panel

- Panel of >4100 genes
- 11 Mb



Data on file.

For Research Use Only. Not for use in diagnostic procedures.



# SeqCap EZ Probes

## Options to fit your research

### Ordering information

#### SeqCap EZ Exome Probes<sup>1</sup>

Roche Cat. No.	Description	Pack Size
06 465 684 001	SeqCap EZ Exome Probes v 3.0	4 rxn
06 465 692 001	64 Mb coding exons and miRNA exons	48 rxn
06 740 294 001	SeqCap EZ Exome +UTR Probes	4 rxn
06 740 308 001	64 Mb coding exons + 32 Mb UTRs	48 rxn
06 740 189 001	SeqCap EZ Exome Plus Probes	12 rxn
06 740 235 001	64 Mb coding exons, plus add up to 200 Mb custom capture targets	48 rxn
06 740 243 001		96 rxn
06 465 587 001	SeqCap EZ HGSC VCRome	12 rxn
06 465 668 001	Designed by scientists at Baylor College of Medicine, this panel covers 23,585 genes and 189,028 non-overlapping exons at a total design size of 45.1 Mb capture target	48 rxn
06 465 676 001		96 rxn
Available Designs <sup>3</sup>	Target Regions	Reference #
SeqCap EZ Exome v 2.0	SeqCap EZ Exome v 2.0 44.1 Mb	4000016420

#### SeqCap EZ MedExome Probes

Roche Cat. No.	Description	Pack Size
07 676 581 001	SeqCap MedExome Probes	4 rxn
07 681 330 001		48 rxn
07 681 348 001		384 rxn
07 681 364 001	SeqCap EZ MedExome PLUS Probes	48 rxn

#### SeqCap EZ Developer Probes

Roche Cat. No.	Description	Pack Size
06 740 278 001		4 rxn
06 471 684 001		12 rxn
06 471 706 001	SeqCap EZ Developer Probes	24 rxn
06 471 714 001	Target up to 200 Mb of genomic regions, contiguous or noncontiguous, for any sequenced non-human genome	48 rxn
06 471 722 001		96 rxn
06 471 749 001		384 rxn
06 471 757 001		960 rxn
Available Designs <sup>3</sup>	Target Regions	Reference #
VirCapSeq-VERT	73 Mb	4000020060
Mouse Exome	54 Mb	9999042611
Soy Exome	85 Mb	4000007450
Mitochondrial Genome	16 kb	4000021490
Switchgrass Exome	50 Mb	4000021240
Maize Exome	110 Mb	4000020170
Barley Exome	88.6 Mb	contact your sales rep for more info
Wheat Exome	106.9 Mb	contact your sales rep for more info
Canine Exome	152 Mb	4000022470
Pig Exome	58.1 Mb	4000017630

## Ordering information

### SeqCap EZ Choice Probes

Roche Cat. No.	Description	Pack Size
06 740 251 001		4 rxn
06 266 282 001		12 rxn
06 266 304 001		24 rxn
06 266 312 001	SeqCap EZ Choice Probes	48 rxn
06 266 339 001	Target 100 kb - 7 Mb human	96 rxn
06 266 347 001	(HG18 or HG19) genomic regions	384 rxn
06 266 355 001		960 rxn

Available Designs <sup>3</sup>	Target Regions	Reference #
Comprehensive Cancer Design	4 Mb	4000007080
Neurology Panel Design	1.5 Mb	4000007090
Human MHC	4.97 Mb	4000024240

### SeqCap EZ Choice XL Probes

Roche Cat. No.	Description	Pack Size
06 740 260 001		4 rxn
06 266 363 001		12 rxn
06 266 371 001	SeqCap EZ Choice XL Probes	24 rxn
06 266 380 001	Target 7 Mb - 50 Mb human	48 rxn
06 266 398 001	(HG18 or HG19) genomic regions	96 rxn
06 266 401 001		384 rxn

Available Designs <sup>3</sup>	Target Regions	Reference #
Inherited Disease Panel	11.8 Mb	4000024240
50 Mb Human UTR Design	50 Mb	4000007080

## SeqCap EZ Reagents

### Ordering information

#### Probes and Reagents

Roche Cat. No.	Description	Kit Size
06 953 212 001	SeqCap EZ Reagent Kit v2	24 rxn
06 953 247 001	SeqCap EZ Reagent Kit v2 Plus	24 rxn
06 777 287 001	SeqCap EZ HE-Oligo Kit A	96 rxn
06 777 317 001	SeqCap EZ HE-Oligo Kit B	96 rxn
07 145 594 001		24 rxn
06 776 345 001	SeqCap EZ Accessory Kit v2	96 rxn
06 977 952 001	SeqCap EZ Pure Capture Bead Probes	24 rxn
05 634 261 001		24 rxn
05 634 253 001	SeqCap EZ Hybridization and Wash Kit	96 rxn
06 684 335 001	SeqCap EZ Developer Reagent	1 mL
07 141 530 001	SeqCap Adapter Kit A	96 rxn
07 141 548 001	SeqCap Adapter Kit B	96 rxn

1. SeqCap EZ Exome Probes are available in human genome build HG19.
2. SeqCap EZ Designs offers a UTR only design (see ordering information under SeqCap EZ Choice XL Probes).
3. SeqCap EZ Designs offer specific panels for focused research. Use the reference number to specify the design you are ordering. More information is available on our website: <http://sequencing.roche.com/products/nimblegen-seqcap-target-enrichment.html>

Published by:

#### Roche Sequencing Solutions, Inc.

4300 Hacienda Drive  
Pleasanton, CA 94588

[sequencing.roche.com](http://sequencing.roche.com)